

IDMS - Intrusion Detection and Monitoring System

The IDMS is a PC based Monitoring and Control System used for the annunciation, control and data storage of alarm conditions through the integration of various perimeter intrusion technologies and day/night video assessment systems, to provide cost effective detection. The IDMS utilizes Commercial-Off-The-Shelf (COTS) hardware and software, which are configured to provide a user-friendly monitoring, control and recording system. The IDMS can be run as a stand-alone, dual redundant or a client/server system depending on customer requirements.



**Series 3000
Intrusion Detection and Monitoring System**

IDMS VALUE PROPOSITION

IDMS (Intrusion Detection and Monitoring System), proven field reliable command and control monitoring system. Part of the integrated family of ECSI security systems

Low Lifecycle Cost	Built on standard off the shelf hardware Easy to use (requiring less staff training time) User friendly GUI Easy to configure outlying sensors
Best Industry Warranty	5 years. Software and Hardware as supplied.
Scalability	Comprehensive integrated alarm assessment and processing across multiple vendor equipment for any size installation Interactive screens to permit specific zone assessment
High Quality	Single or redundant servers Stand-by system (Spare PC with software loaded) Optional dual counter rotating fiber optic Ethernet rings resistant to single points of failure

HARDWARE

BENEFITS

Supports	Open Architecture (LAN/WAN, Ethernet, SM, MM, Fiber, RS232, RS-485), FSK TCP/IP, etc.
Communications	LAN/WAN- Ethernet, RS485, TCP/IP Wireless Communications. HF, VHF, and UHF
Display	Display Display LCD, Plasma, CRT, Hardwired
Network Security Appliance	Reliable, flexible, scalable, easy to integrate and secure

SOFTWARE FEATURES

Topography Map	Integrated Relational Embedded Data Bases fast and reliable ODBC (Access, SQL, Oracle, etc.)
Aerial Photo	Encryption – UHS, DES and DEA (DCID, NIST & TDEA)
3D Mapping	Terrain Analysis
Integrate sensors, day/night, cameras and thermal imagers	Distributed, scalable perimeter assessment

BENEFITS

APPLICATIONS

Government

Department of Defense, Department of Energy, Airports & Borders

Commercial

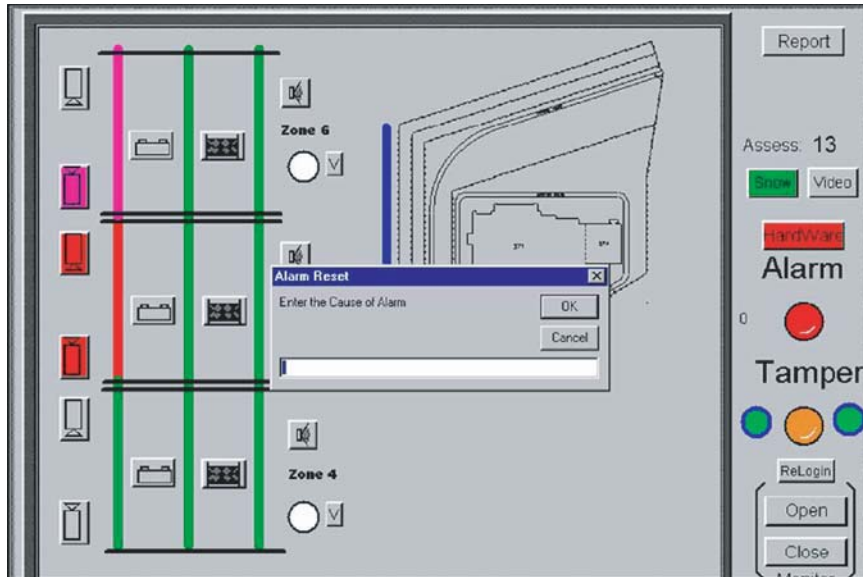
Corporate Campuses, Research & Development Facilities

Nuclear

Power Plants, Production & Reclamation Facilities

Industrial

Pharmaceutical, Chemical & Petrochemical Plants



SPECIFICATIONS

HARDWARE

Processor:	2.00 GHz/400 P4, GX260T, 512 cache
Memory:	250 MB Non-ECC 266 MHz DDR UDUNN
CD-ROM:	48x max. variable
Diskette Drive:	3.5, 1.4 MB
Zip® Drive:	100 MB internal
Sound Card:	Integrated
Speakers:	PC
Monitor:	19" (17.9 viewable) 1600 x 1200 pixels dual display
USB Ports:	2
Dimensions:	6.4" W x 13.4" D x 15.5" H
Power:	145 Watts
Input Voltage:	90 to 135V at 60Hz
Output Wattage:	145-Watts max. continuous
Output Voltage:	3.5V, 5V and 12V
Heat Dissipation:	180 BTU/hour (min. value)
Power Management:	APM 1.2 hard spin down and monitor control
Backup Battery:	3.0VCR2032 Lithium Magnesium oxide coin cell

SOFTWARE

Operating System	Windows 2000
Database	Microsoft Access Database
Communications	TCP/IP
Common Operational Picture	ECSI Graphic User Interface

ECSI

ECSI INTERNATIONAL, INC.

ISO 9001:2000 REGISTERED

790 Bloomfield Avenue, Building C-1

Clifton, NJ 07012

Tel: (973) 574-8555

Fax: (973) 574-8562

ecsi@anti-terrorism.com

www.anti-terrorism.com